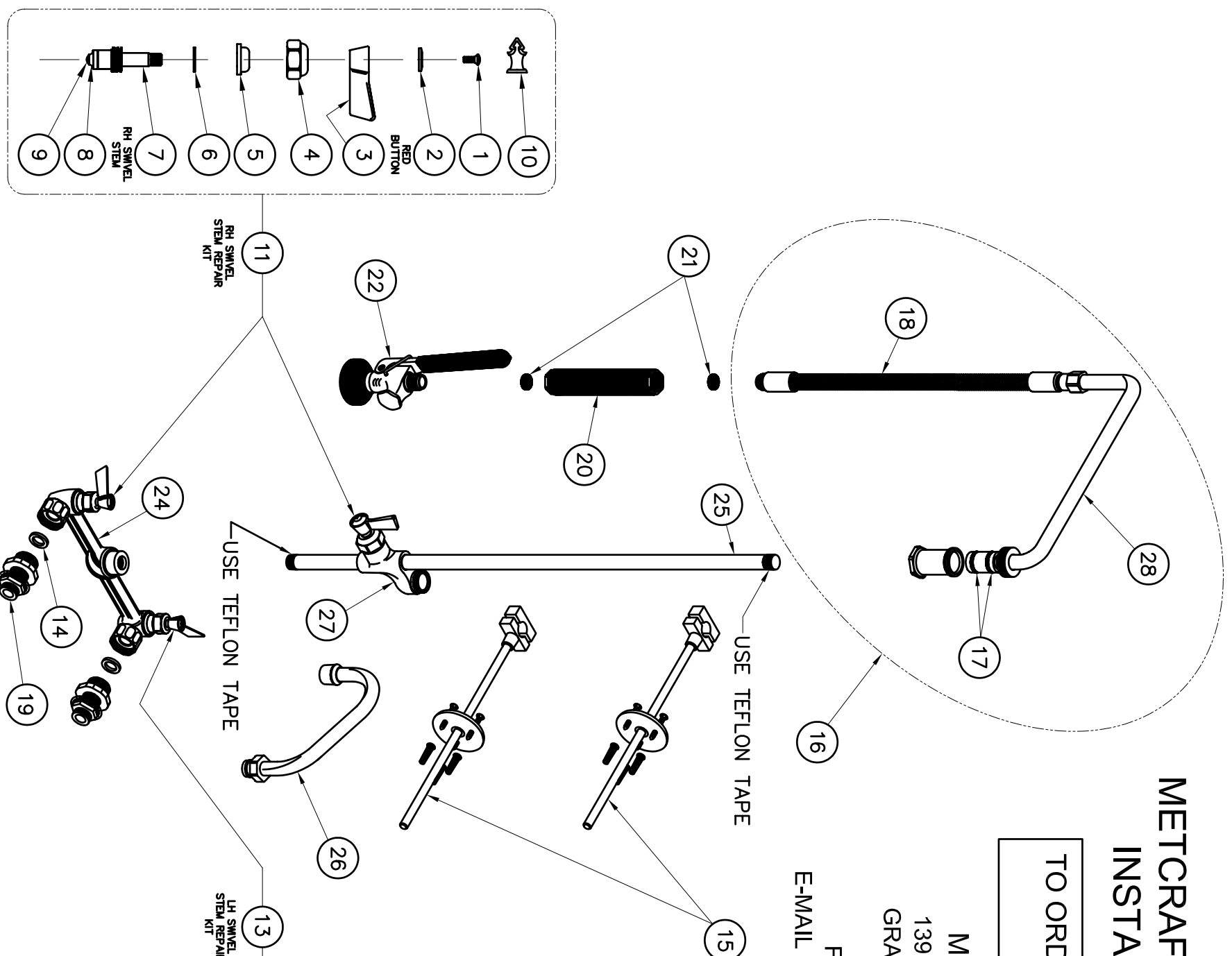


# METCRAFT 23060 PRE-RINSE INSTALLATION GUIDE

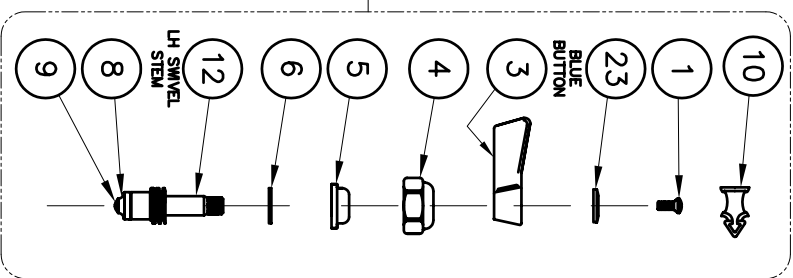
**TO ORDER SERVICE PARTS**  
800-444-9624

METCRAFT, INC.  
13910 KESSLER DRIVE  
GRANDVIEW, MO 64030

FAX 816-761-0544  
E-MAIL [service@powersoak.com](mailto:service@powersoak.com)



**15** BOTH WALL BRACKETS MUST BE INSTALLED. LOCATIONS ARE MARKED ON THE RISER TUBE, ITEM 25. USE PLASTIC ANCHORS FOR TILE OR CONCRETE WALLS. USE TOGGLE ANCHORS FOR DRYWALL OR HOLLOW WALLS.



IF YOUR INSTALLATION HAS ANTI-BACKFLOW STEMS, ORDER METCRAFT 24889 FOR RH CHECK STEM REPAIR KIT.

VERIFY THAT EACH WASHER, ITEM 14, IS FIRMLY PRESSED INTO THE RELIEF AREA OF THE CONCENTRIC, ITEM 19, BEFORE ASSEMBLING THE CONCENTRICS TO THE CONTROL VALVE, ITEM 24.

IF YOUR INSTALLATION HAS ANTI-BACKFLOW STEMS, ORDER METCRAFT 24888 FOR LH CHECK STEM REPAIR KIT.

Item	Part Number	Description
1	29116	Screw
2	29136	Red button
3	22221	Lever handle
4	29138	Bibb cap
5	29139	Duck gasket
6	29149	Washer
7	29158	RH swivel stem
8	29159	Seat washer
9	29160	Screw
10	29154	Lube
11	29161	RH swivel stem repair kit
12	29157	LH swivel stem
13	29162	LH swivel stem repair kit
14	29177	Gasket
15	29167	Wall bracket
16	29173	Hose/spout subassembly
17	29172	O-ring
18	24839	Hose, 15.5" pre-rinse
19	29178	Concentric
20	29170	Handle
21	29169	Gasket
22	22588	Spray valve
23	29137	Blue button
24	29176	Control valve
25	29168	Riser
26	29174	Spout
27	29175	Add-on body
28	29150	Arm