

# Power Soak<sup>®</sup>

## Installation Instructions for Kay Chemical / Power Soak Dual Dispenser Pump Rev. 2.1



### Step #1

Verify that the male and female multi-pin connectors of the wiring harness, between the two halves of the unit, are tightened and secure.



Multi-pin connector behind unit

### Step #2

Locate the multi-pin connector that is underneath the clean drain board (behind the dual dispenser pump) and secure it to the back of the dispenser.



Multi-pin connector behind chemical dispenser

## Preliminary Setup and Chemical Holder Installation

### Step #1

Shorten the existing APSC DETERGENT outlet tube to approximately 8 inches. This product will be used for general cleaning but **not** for washing dishes.

**Note:** In a new store, this equipment may not yet be installed. If so, disregard this step.



Shorten to 8"

### Step #2

Install the Liquid Storm bag holder. The holder comes in two pieces. First, attach the wall bracket. If space is available, mount the bracket to the wall **next** to the Power Soak unit at the same height as the detergent dispenser or, if necessary, above the wash tank. Use the mounting screws and anchors that are provided with the installation kit to mount the bracket. **Important: Do not mount the Liquid Storm bag holder above the Rinse Tank, Sanitizer Tank or Clean Drain Board sections of the Power Soak unit. Doing so may violate local health and safety codes.**



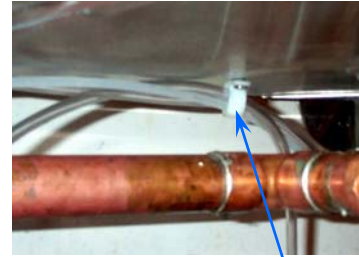
### Step #3

Install the front section of the bag holder.

## Installation of the Pump Feed and Discharge Tubes

### Step #1

Run a piece of “clear” plastic tubing (the Feed Tube), provided with the installation kit, from the detergent bag holder to the dispenser pump. If necessary, use the support loops located under the unit’s sinks to hang the tubing. Cut the detergent Feed Tube to the proper length and connect it to the barbed fitting on the left, “Wash Detergent”, pump.



Tube support loop

### Step #2

Run a piece of “clear” plastic tubing (the Feed Tube), provided with the installation kit, from the sanitizer supply. Cut the sanitizer Feed Tube to the proper length and connect it to the barbed fitting on the right, “Sanitizer”, pump.

### Step #3

Secure both lines to the barbed fittings using plastic wire ties. To ensure the tubing is secure, pull the tie wraps tight using a pair of pliers. Cut off the extra portion of the tie wraps.

### Step #4

Use the “white” (opaque) plastic tubing provided with the installation kit for both the Wash Tank and Sanitizer Tank discharge tubes. Run the tubes from the injector nozzles, located in the sides of the tanks, to the appropriate pumps. Cut the tubes to the correct length and connect the tubes between the injector nozzle and the “discharge” side of the appropriate dispenser pump using the supplied compression fittings.



Sanitizer feed tube

Sanitizer discharge tube

Detergent discharge tube

Detergent feed tube

### Step #5

Place a bag of Liquid Storm detergent into the bag holder. Locate the detergent connector fitting, fasten it to the Feed Tube then connect the fitting to the bag of Liquid Storm.

**Warning: Refer to, and follow, all specific handling instructions provided by the chemical manufacturer. Instructions, labels and MSDS sheets should be supplied with the detergent.**



### Step #6

Connect the Feed Tube from the Sanitizer pump to the Kayquat sanitizer supply.

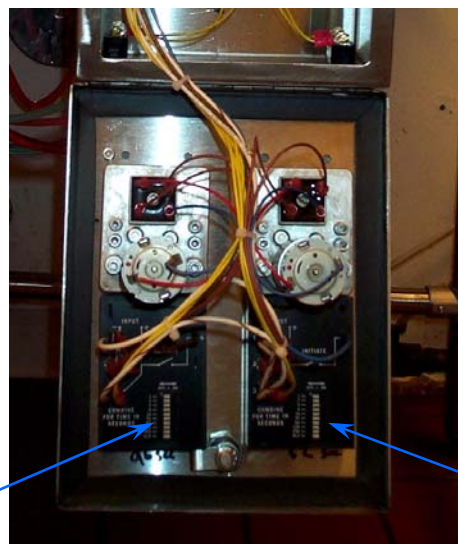
**Warning: Refer to, and follow, all specific handling instructions provided by the chemical manufacturer. Instructions, labels and MSDS sheets should be supplied with the sanitizing agent.**



## Pump Timer Settings for Wash Tank (Liquid Storm)

Open the dual dispenser pump enclosure and locate the correct timer for the Liquid Storm (detergent) dispenser pump. The correct timer is mounted on the **left-hand** side of the door. The DIP switches on the timer represent a specific number of seconds. Set any combination of the switches to "ON" in order to obtain the proper amount of pump run time.

DIP switches for  
DETERGENT  
pump timer



DIP switches for  
SANITIZER  
pump timer

## **Pump Timer Settings for Wash Tank (Liquid Storm), cont'd**

To determine the correct timer setting, measure the depth of the Power Soak unit (from the front edge to the back edge). Then, measure the Wash Tank from the left side to the right side. Use the following information to set the DIP switches on the timer:

<b>34" deep unit - Liquid Storm Timer Settings for PS-200 Wash Tank</b>				
Tank Length (inches)	Tank Volume (gallons)	Liquid Storm (ounces)	Pump Time (seconds)	DIP Switch Settings (ON)
30	59.7	5.74	69	64, 4, 1
36	71.7	6.88	83	64, 16, 2, 1
42	83.6	8.03	96	64, 32, 1
48	95.6	9.18	110	64, 32, 8, 4, 2, 1
54	107.5	10.32	124	64, 32, 16, 8, 4
60	119.5	11.47	138	128, 8, 1
66	131.4	12.62	151	128, 16, 4, 2, 1
72	143.4	13.76	165	128, 32, 4, 1

<b>30" deep unit - Liquid Storm Timer Settings for PS-200 Wash Tank</b>				
Tank Length (inches)	Tank Volume (gallons)	Liquid Storm (ounces)	Pump Time (seconds)	DIP Switch Settings (ON)
30	51.4	4.94	59	32, 16, 8, 2, 1
36	61.7	5.92	71	64, 4, 2, 1
42	72.0	6.91	83	64, 16, 2, 1
48	82.3	7.90	95	64, 16, 8, 4, 2, 1
54	92.6	8.89	107	64, 32, 8, 2, 1
60	102.9	9.87	118	64, 32, 16, 4, 2
66	113.1	10.86	130	128, 2
72	123.4	11.85	142	128, 8, 4, 2

## Pump Timer Settings for Sanitizer Tank (Kayquat)

Open the dual dispenser pump enclosure and locate the correct timer for the Kayquat (sanitizer) dispenser pump. The correct timer is mounted on the **right-hand** side of the door. The DIP switches on the timer represent a specific number of seconds. Set any combination of the switches to “ON” in order to obtain the proper amount of pump run time.

To determine the correct timer setting, measure the depth of the Power Soak unit (from the front edge to the back edge). Then, measure the Sanitizer Tank from the left side to the right side. Use the following information to set the DIP switches on the timer:

<b>34" deep unit - Kayquat Timer Settings for PS-200 Sanitizer Tank</b>				
Tank Length (inches)	Tank Volume (gallons)	Kayquat (ounces)	Pump Time (seconds)	DIP Switch Settings (ON)
14	20.9	5.52	44	32, 8, 4
16	23.9	6.31	50	32, 16, 2
19	28.4	7.49	60	32, 16, 8, 4
20	29.9	7.89	63	32, 16, 8, 4, 2, 1
24	35.8	9.46	76	64, 8, 4
30	44.8	11.83	95	64, 16, 8, 4, 2, 1

<b>30" deep unit - Kayquat Timer Settings for PS-200 Sanitizer Tank</b>				
Tank Length (inches)	Tank Volume (gallons)	Kayquat (ounces)	Pump Time (seconds)	DIP Switch Settings (ON)
14	18.0	4.75	38	32, 4, 2
16	20.6	5.43	43	32, 8, 2, 1
19	24.4	6.45	52	32, 16, 4
20	25.7	6.79	54	32, 16, 4, 2
24	30.9	8.15	65	64, 1
30	38.6	10.18	81	64, 16, 1

## **Priming the Feed and Discharge Lines**

After both pump timers have been set, close and lock the door to the dispenser enclosure and locate the “prime” buttons for the Wash Detergent and Sanitizer pumps. The prime buttons are located under the enclosure on the left-hand side (Detergent) and right-hand side (Sanitizer). Press and hold the left prime button until the Detergent flows from the Wash Tank injector nozzle. Press and hold the right prime button until Sanitizer flows from the Sanitizer Tank injector nozzle.

**Note: after priming both lines be sure to clean up any excess detergent or sanitizer remaining in the tanks.**

**The installation of the dual dispenser pump is now complete.**

If you have any questions concerning the **installation** of the dispensing system, please call the Metcraft, Inc. Service Department @ 816-761-3250.

If you have any questions concerning the **operation** of the dispensing system, please call Kay Chemical Customer Service @ 800-529-5458.

